



# ESTATE AUCTION

HARTSVILLE, TN 37074

TRACTORS, EQUIPMENT, VEHICLES, TOOLS,  
FURNITURE, PERSONAL PROPERTY & MORE!

PRSR STD  
U.S. POSTAGE  
PAID  
LEBANON, TN  
PERMIT#131

SATURDAY, SEPTEMBER 8TH, 10:00AM

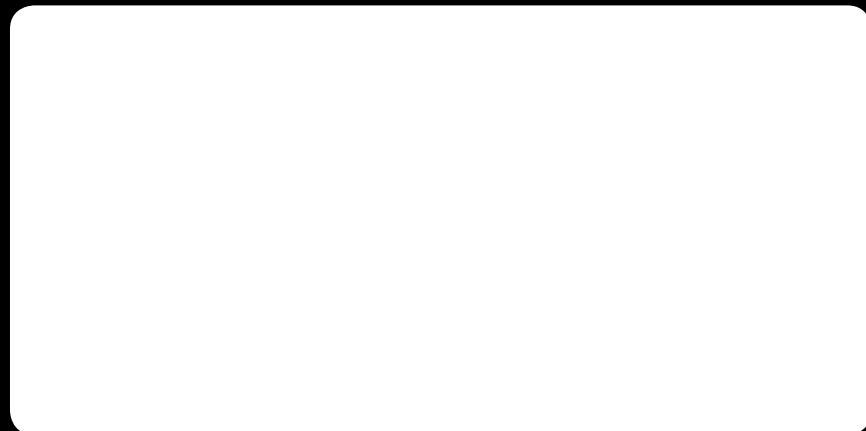
# ESTATE AUCTION

LARGE 2005 DOUBLE WIDE ON 5.35 ACRES

Saturday, September 8th, 2018 - 10:00am

1104 WEST MAIN STREET  
LEBANON, TN 37087

INVEST SAFELY IN TENNESSEE REAL ESTATE!  
For more information go to [MikeWalkerAuctions.com](http://MikeWalkerAuctions.com)



OFFICE: (615) 444-7100  
FAX: (615) 444-8008  
[MIKEWALKERAUCTIONS.COM](http://MIKEWALKERAUCTIONS.COM)  
FIRM# 5138



# ESTATE AUCTION!

September 8th, 10:00am 605 Glasgow Branch Road, Hartsville, Trousdale Co., TN

Viewing of the property will be by appointment only & on Friday  
September 7th, 10-2pm & auction day two hours before the auction!

**DIRECTIONS:** From the intersection of McMurry Blvd and Broadway in downtown Hartsville TN, travel east on McMurry Blvd/Hwy 25 for approximately 6.3 miles and turn left onto Glasgow Branch Road and property will be on the left, watch for signs. (Parking will be in the fields)

Tractors, Equipment, Vehicles, Tools, Furniture, Personal Property & more!



This is a beautiful 5.35-acre tract with a large 2,232 square foot, 2005 doublewide home on a permanent foundation. The home features four bedrooms, two living areas, two full baths, a spacious kitchen and laundry room with central heat and air. The land gently rolls to level; some fenced areas, with scattered trees and beautiful views of the countryside. The property has several outbuildings and one tall equipment carport that will remain with the property. This home and land will need some TLC, but overall a nice place that just needs a little work.

Viewing of the property will be by appointment only & on Friday  
September 7th, 10-2pm & auction day two hours before the auction!

Location: 605 Glasgow Branch Road, Hartsville, Trousdale Co., TN 37074



For More Details Call Now!  
(615) 308-9009

WEST MAIN REALTY & AUCTION



WEST MAIN REALTY & AUCTION



Referring Agent: Wes Stone Crye-Leike  
**CRYE-LEIKE**  
REAL ESTATE SERVICES

5% BUYER'S PREMIUM ON REAL ESTATE • 10% BUYER'S PREMIUM ON PERSONAL PROPERTY

5% BUYER'S PREMIUM ON REAL ESTATE • 10% BUYER'S PREMIUM ON PERSONAL PROPERTY

ALL INFORMATION IS BELIEVED TO BE CORRECT, BUT NOT WARRANTED OR GUARANTEED. THE PROPERTY IS BEING SOLD ON AN "AS-IS, WHERE-IS" BASIS. ANNOUNCEMENTS MADE DAY OF SALE TAKE PRECEDENCE OVER ALL ADVERTISING. EACH OFFICE IS INDEPENDENTLY OWNED AND OPERATED

MIKE WALKER CAI, PRI, GRI AUCTIONEER #2361

CONTACT THE AUCTIONEERS AT (615) 308-9009



# 605 Glasgow Branch Road, Hartsville, TN

## PERSONAL PROPERTY 10% BUYER'S PREMIUM



**AUCTIONEER'S NOTE:** This tract of land is beautiful with views of the surrounding countryside! It will need some TLC but has great potential to make a nice mini farm. It is convenient to Hartsville, Lebanon, and Carthage. If you have been looking for a good investment in land, need a large home and room for pets or horses, be at this auction sale. All the tractors were tested and run strong! The other vehicles are in various states of running, not running, and in need of repair and are selling As-Is and buyers must fill in title upon purchase. We will be selling the personal property starting at 10:00 am and the real estate at noon!



**GENERAL TERMS:** 5% Buyer's Premium on Real Estate and 10 % Buyer's Premium on personal property will be added to the final bid price to determine the final contract sales price. A 15% nonrefundable deposit of the Total Contract price and signing of the purchase contract is required immediately at the close of the auction. Century 21 West Main Realty & Auction LLC is agent for the Seller, not a Buyer's agent. Terms and Conditions announced the day of the auction will take precedence over written material and prior oral statements. All documents and information are being furnished to the bidder for bidder's convenience and it is the responsibility of the bidder to determine that information contained herein is accurate and complete. Any reliance on the contents shall be solely at the bidder's risk. Potential bidders are encouraged to make their own inspections and due diligence prior to the auction. All real estate and personal property are being sold "AS-IS" Where IS, and Real Estate is selling SUBJECT TO COURT APPROVAL. Closing on the real property will be no later than October 19th, 2018. Personal Property items subject to change.

**REAL ESTATE TERMS:** CASH AT CLOSING on or before October 19th, 2018  
 Financing available through Wilson Bank and Trust, (615-374-4133), or Contact the lender of your choice to make arrangements prior to the auction. This auction is not contingent on buyer's financing or any other buyer contingency.

**PERSONAL PROPERTY TERMS:** CASH, GOOD CHECK DAY OF SALE! Must have ID to register for a Bid Number!

**CLOSING ATTORNEY:** Mark Lee at Lee & Lee Attorney's 615-444-1312

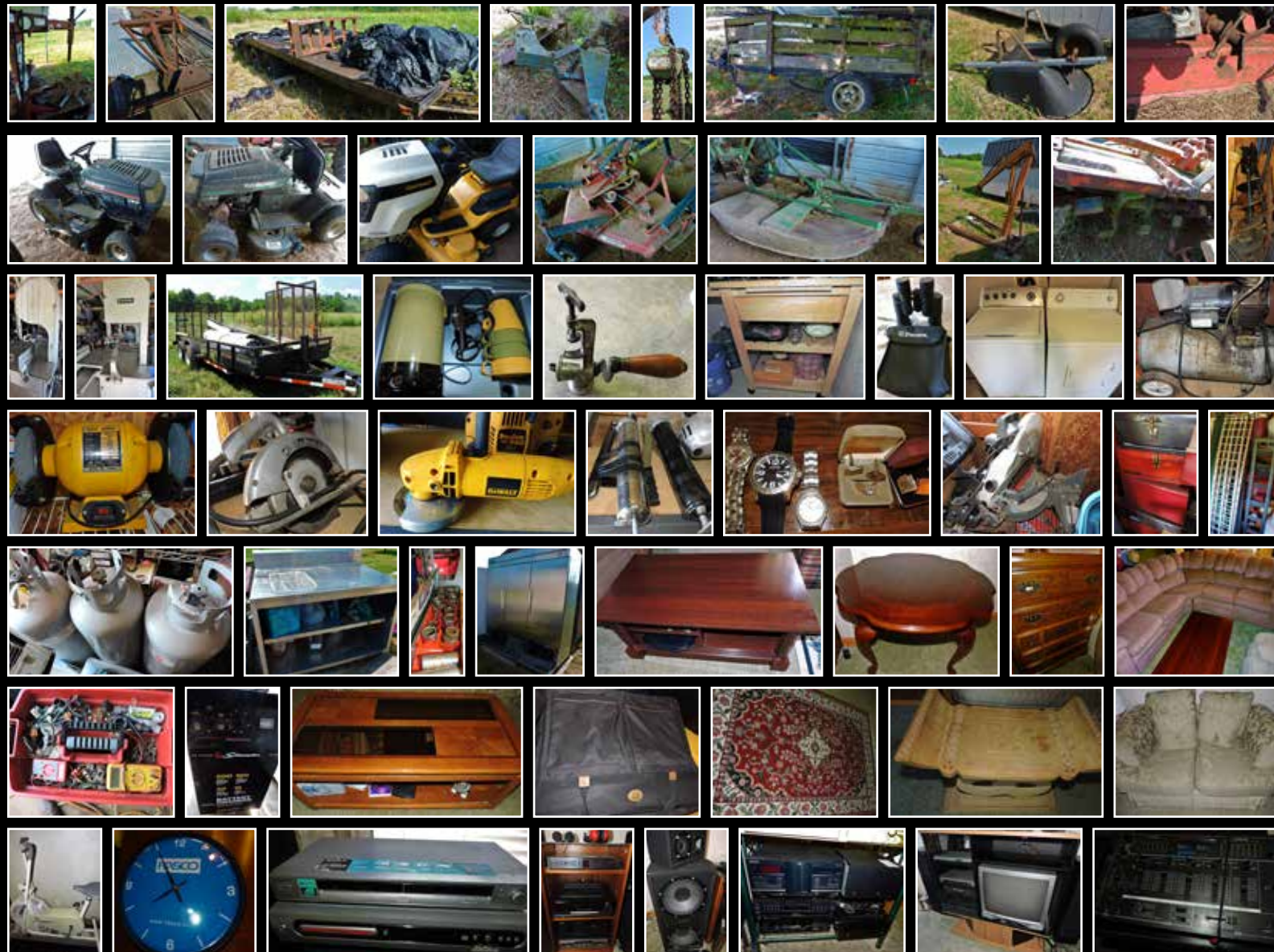
**SELLER:** Joana Nae Dede Addai Andrews as Personal Representative for the Godfried Andrews Estate

**REFERRING AGENTS:** Wes Stone Crye Leike Realtors

**AUCTIONEERS:** MIKE WALKER TN#2361 CYNTHIA WALKER #7007 Firm #5138

- Mazda VS Dual Sport Truck 2002 B30
- Camaro / Scrap Metal
- Ford Escort LX 1994 SW
- Ford Escort LX
- Ford Taurus 1999
- Nissan Sentra GXE
- Mercedes 250 1972
- Ford Ranger XLT 1988
- Ford F150 Truck 1989
- Chevy 2500 Truck
- Ford Truck w/ Topper
- Allis Chalmers Tractor 180 / Not Running
- John Deere 830 Tractor 124799L Running Condition
- International Continental 504 Tractor 37558181
- International 444 Tractor
- Cub Cadet LTX 1050 Riding Mower
- Yard Machines Riding Mower 21 HP
- Yard Machines Riding Mower 12.5 HP
- Power Pro 5500 Gas Generator
- Tools
- Jack Stands
- Aluminum Pots & Pans
- 4 Ft. Stainless Steel Prep Table
- Campbell Hausfeld Air Compressor
- Deep Well Socket Set
- 8" Bench Grinder
- Yard Tools
- Aluminum 5 Star ATV Ramps
- Trailer Ramps
- Tractor Augers
- Tool Boxes
- Skil Saw Miter Box
- Stainless Steel Rack Shelving
- Propane Tanks
- Assorted Cookware
- 6" Bench Grinder
- Hand Tools
- Patio Umbrellas
- Nylon Straps
- Gas Weed Eaters
- Stainless Steel 4 ft Prep Table
- 4 x 4 Fence Posts
- Pre-fab Fencing
- Clarke Impact Wrench
- ATV Lift 15016
- HD Truck Jack
- Craftsman Wet Dry Vacuum
- Wheelbarrow Tires & Wheels
- Two Wheel Dollie
- McCulloch Electric Chain Saw
- Kirby Heritage Vacuum Cleaner
- Top Box Tool Box
- Schumacher Battery Charger
- Chain Hoist
- Outdoor Stadium Speakers
- G Force Air Compressor
- Drills
- Grease Guns
- Dewalt Hand Grinder
- Air Tools
- Lawn Mower Tires
- Socket Sets
- Onkyo Receiver
- RCA Home Theater TV
- Clayton Marcus Sofa
- Stereo Equipment
- Envirotemp Space Heater
- Large Dining Room Table & Chairs
- Area Rugs
- Display Cabinets
- Clocks
- Whirlpool Washer
- Whirlpool Dryer
- Binoculars
- Kitchen Rolling Cart
- Coffee Perk Set
- Large Sectional Sofa
- Disco Ball
- Oak Bed Frame
- White Post Bed Frame
- Luggage
- Camera Equipment
- Area Rugs
- Accent Tables
- Audio Home Theater Speakers
- Panasonic Stereo
- Mens Watches & Cufflinks
- Tire Changer
- Engine Puller
- Stainless Steel Refrigerator
- Jet 2 Ton Chain Hoist L-80
- Butcher Boy Meat Saw 1640S
- Biro Meat Saw 3334 (2)
- Kenmore 20 Stand Up Freezer
- Montgomery Ward Stand Up Freezer
- Frigidaire Stand Up Freezer
- Frigidaire Deep Freeze Chest
- Enterprise Deep Freezer
- Daijaing 2600-2B Vacuum Packing Machine
- Schumacher SE 4020 Battery Charger
- Hay Forks
- Scraper Blade 6 ft.
- Tandem Trailer 12' x 7'
- Tri Axle Trailer 8' x 25'
- Dual Gate Tandem Trailer 18' x 7'
- Plow Discs & Single Plow
- John Deere 6 Ft. Bush Hog
- Fred Cain Suburban 5 Ft. Bush Hog
- Rotary Tiller 80476
- Yard Trailers
- John Deere Bush Hog 6 Ft
- Finish Mower 5 ft.
- Bush Hog 307 7 ft.

**Personal Property is Subject to Change**



**For other terms, documents & photos go to**  
[www.MikeWalkerAuctions.com](http://www.MikeWalkerAuctions.com)